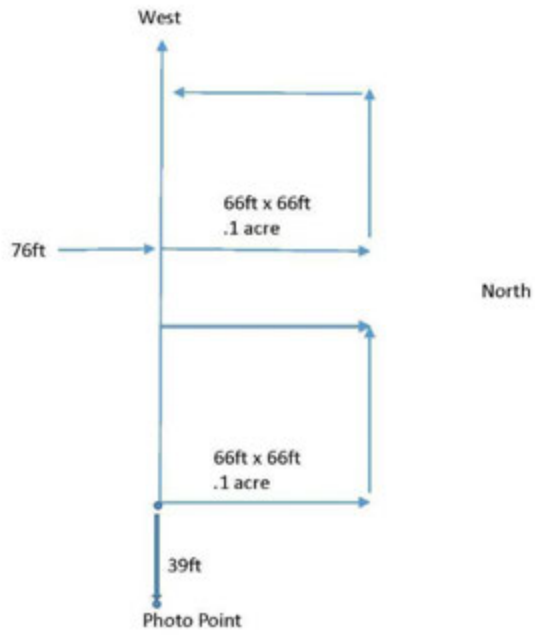


BT 1 Monitoring Transect – UTM 0601576 3604737





### **Live Plant Count**

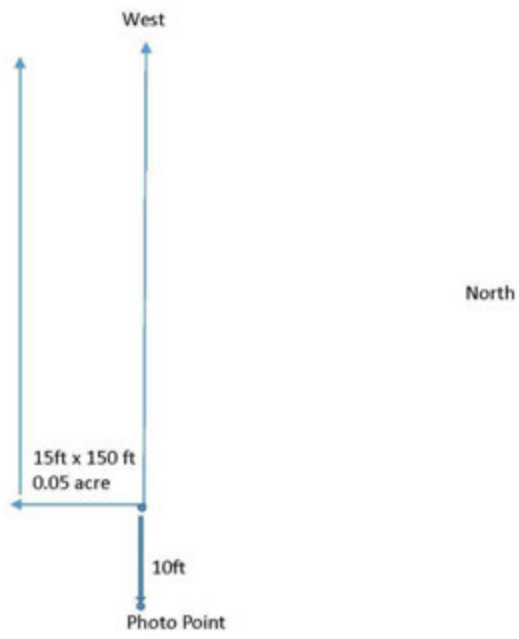
2017 – 28 live plants \_\_\_\_\_ Avg 140 plants per acre Collected June 14<sup>th</sup>

9-11-2019 – 18 live plants, – Avg 90 plants per acre

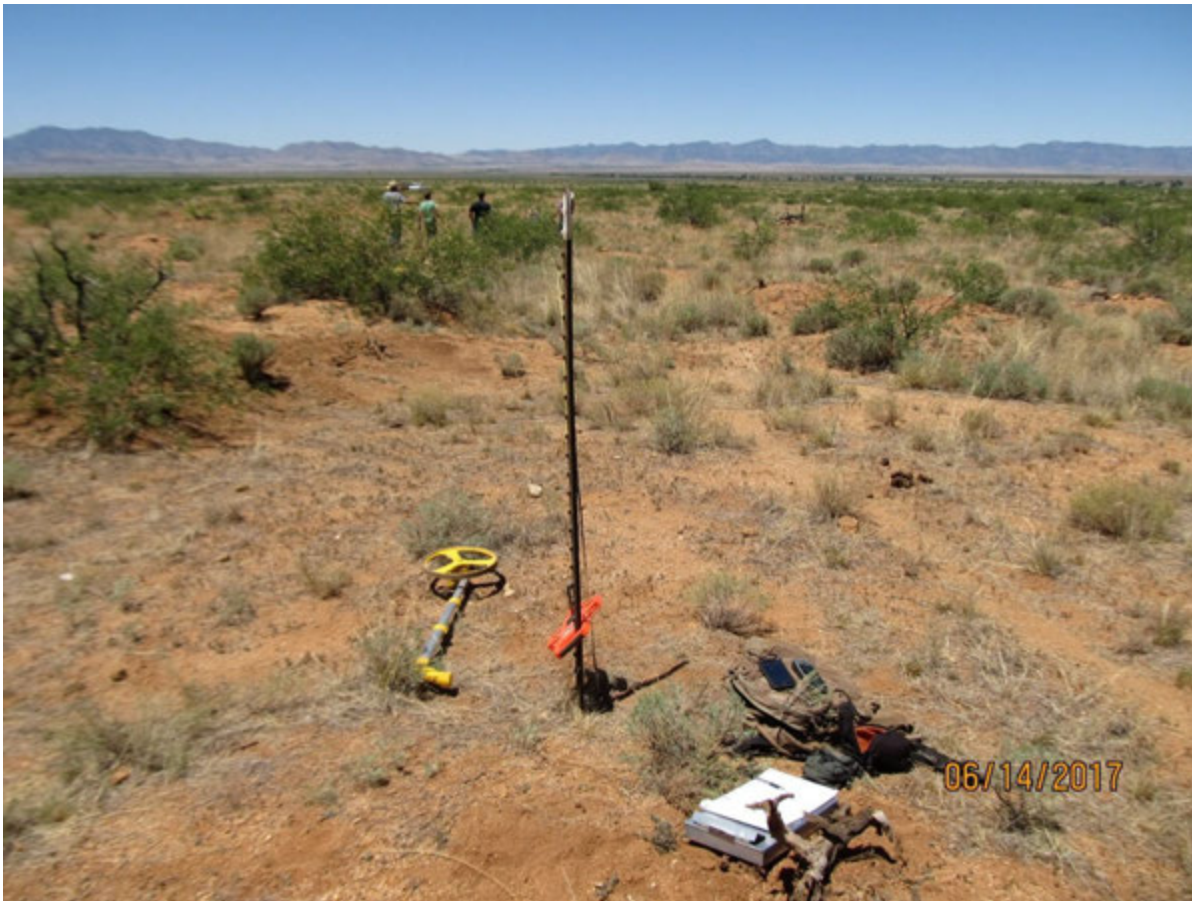
Area treated w/ Velpar in 2018



BT 2 Monitoring Transect – UTM 0600836 3605564







## **Live Plant Count**

2017 – 11 live plants \_\_\_\_\_ Avg 220 plants per acre Collected June 14th

9-11-2019 – 4 live plants, 7 dead – Avg. 80 live plants per acre

Ran a 100 plant (next nearest plant) transect, staying on ridge – 85 dead plants/15 live plants

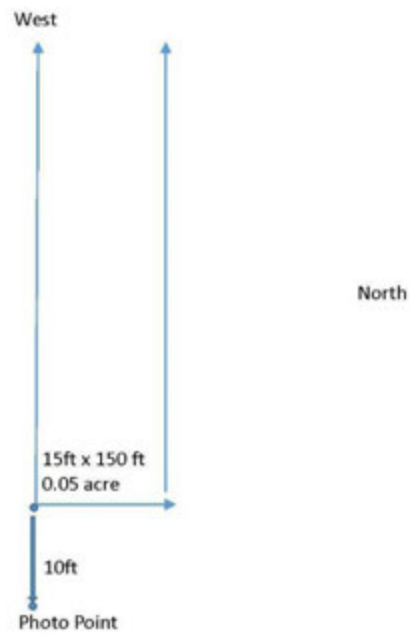


17 10/10/10  
10/10/10  
10/10/10  
10/10/10  
10/10/10





BT 3 Monitoring Transect – UTM 0600936 3605545





## Live Plant Count

2017 – 13 live plants \_\_\_\_\_ Avg 260 plants per acre Collected June 14<sup>th</sup>

4 wait-a-bit

9-11-2019 – 1 live Mesquite, 1 live wait a bit, 11 dead Mesquite, 5 dead wait a bit

