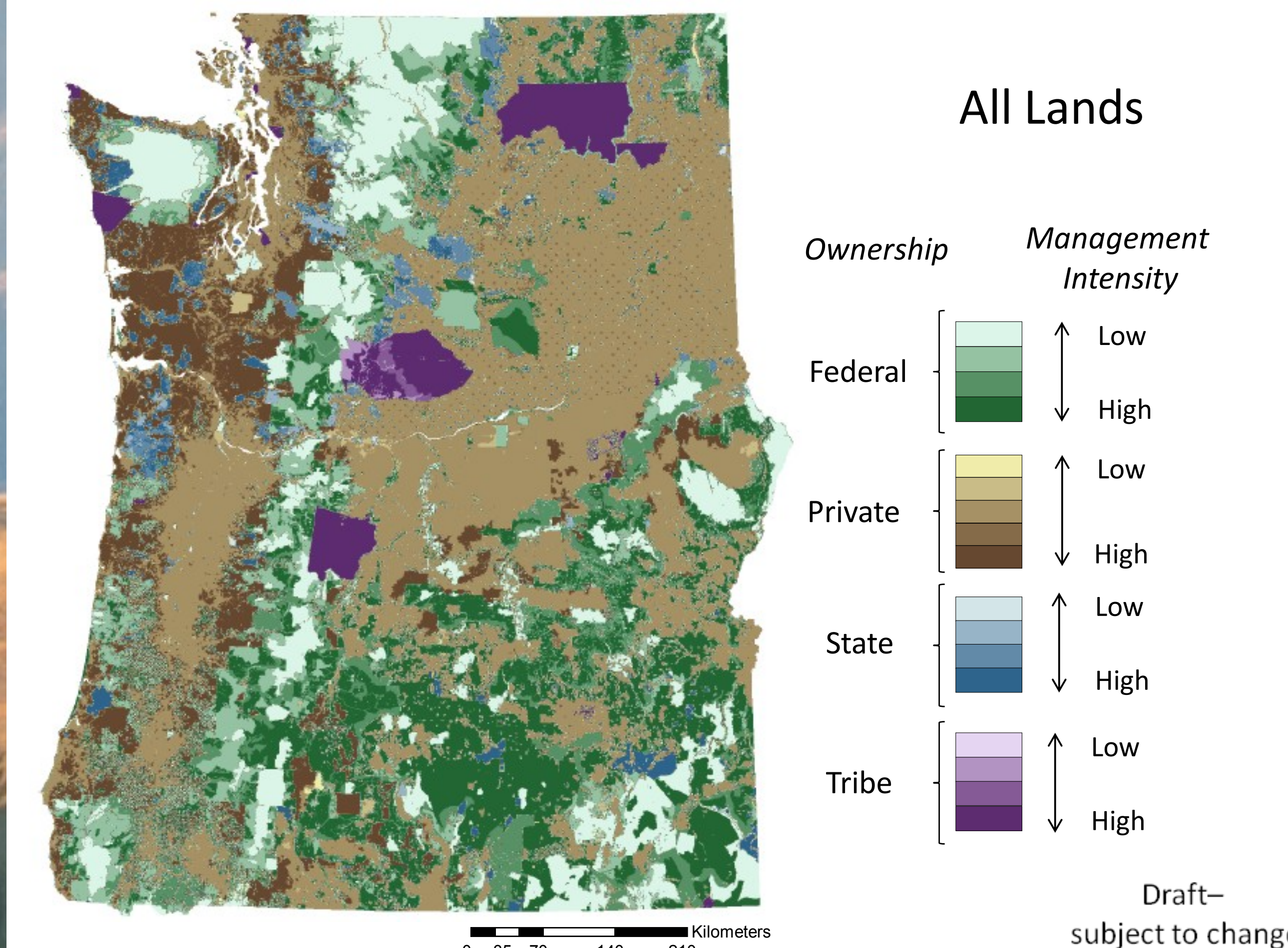


# INFORMING CONSERVATION ACROSS ALL LANDS



Integrated  
Landscape  
Assessment  
Project = ILAP



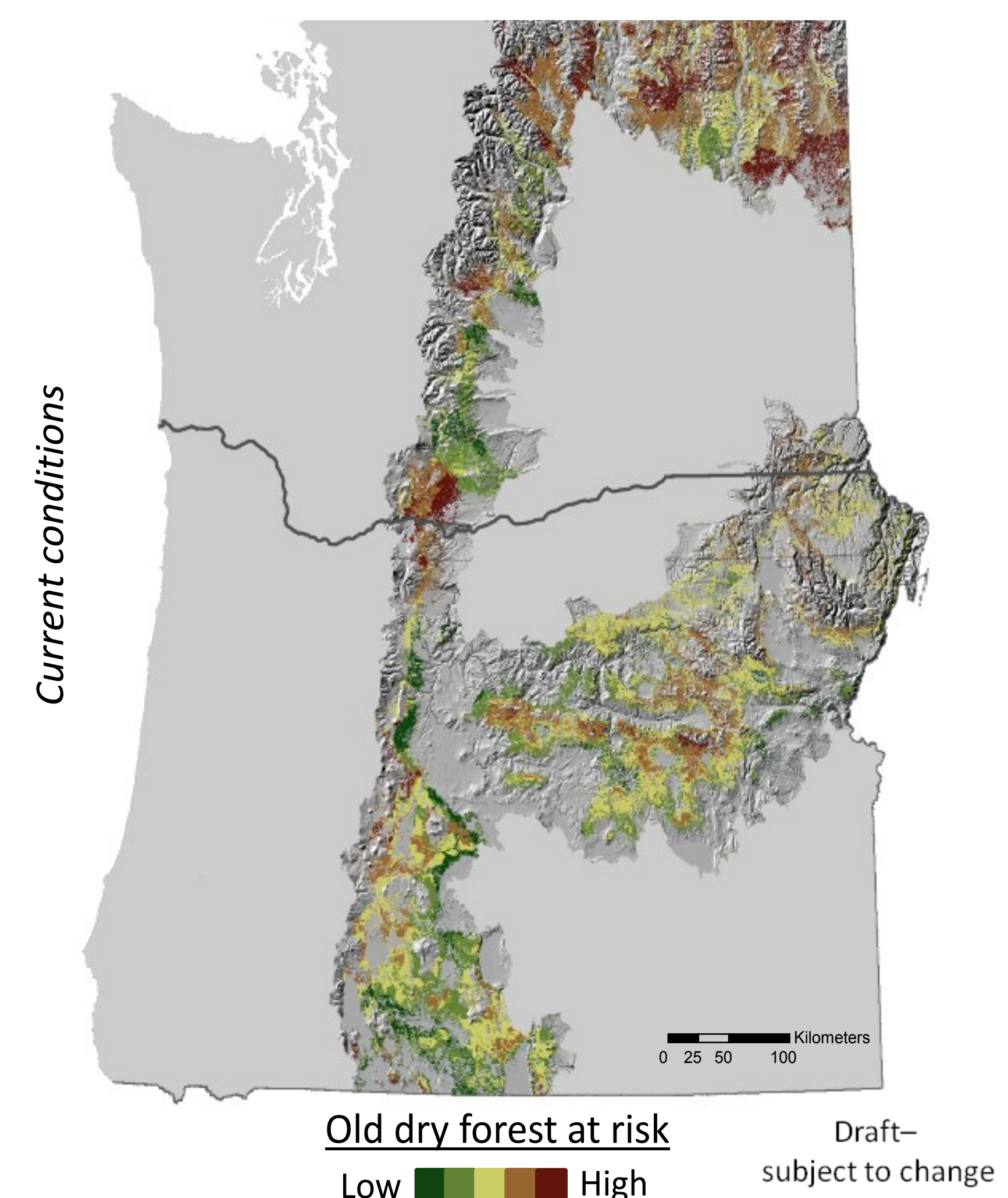
The Integrated Landscape Assessment Project (ILAP) has developed vegetation data sets and models for millions of acres across the American Northwest and Southwest, allowing decision makers to explore possible changes in landscape conditions under different management scenarios.

ILAP helps land owners and conservation groups understand interactions among biophysical, social, and economic effects across large landscapes.

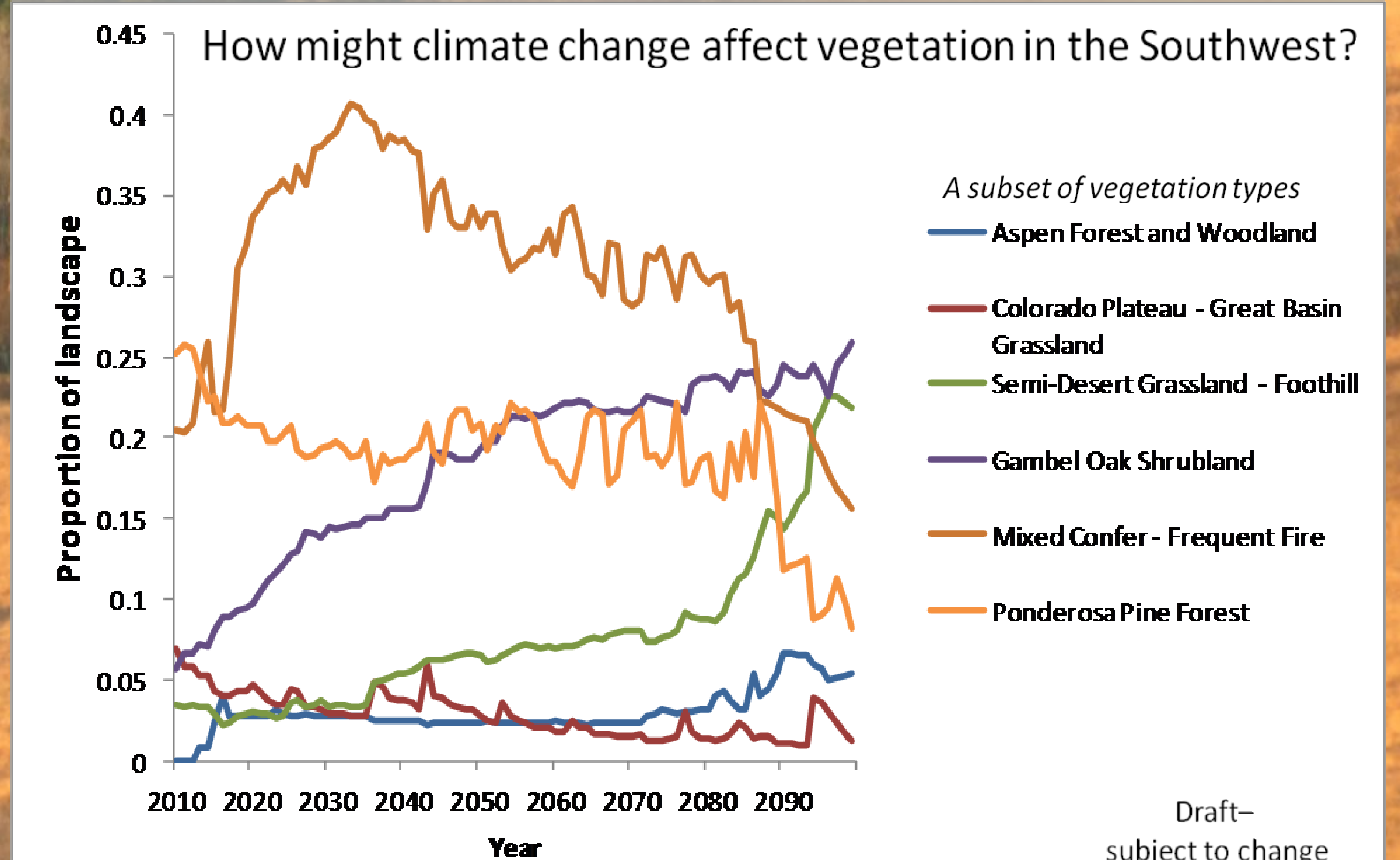
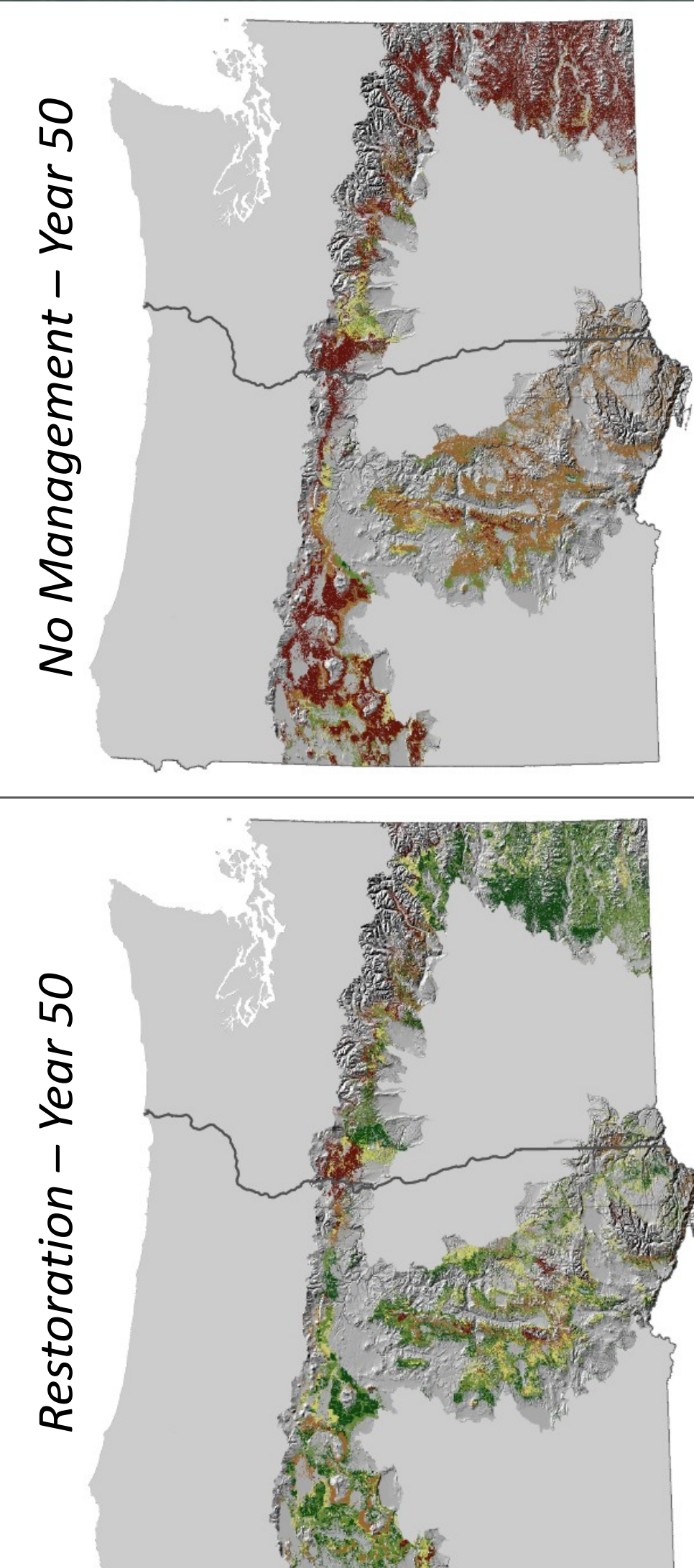


ILAP brings together a wide range of expertise, allowing for integrated assessments that include issues such as wildlife habitat, community economics, fire risk, vegetation development, and climate change.

Where can restoration make a difference?



What areas should we prioritize for restoration? Treatments to counteract decades of fire suppression will be more effective in some areas than others. ILAP produces maps that allow decision makers to compare future forest conditions under restoration versus “no management” to see where treatments are most needed across all ownerships on the landscape.

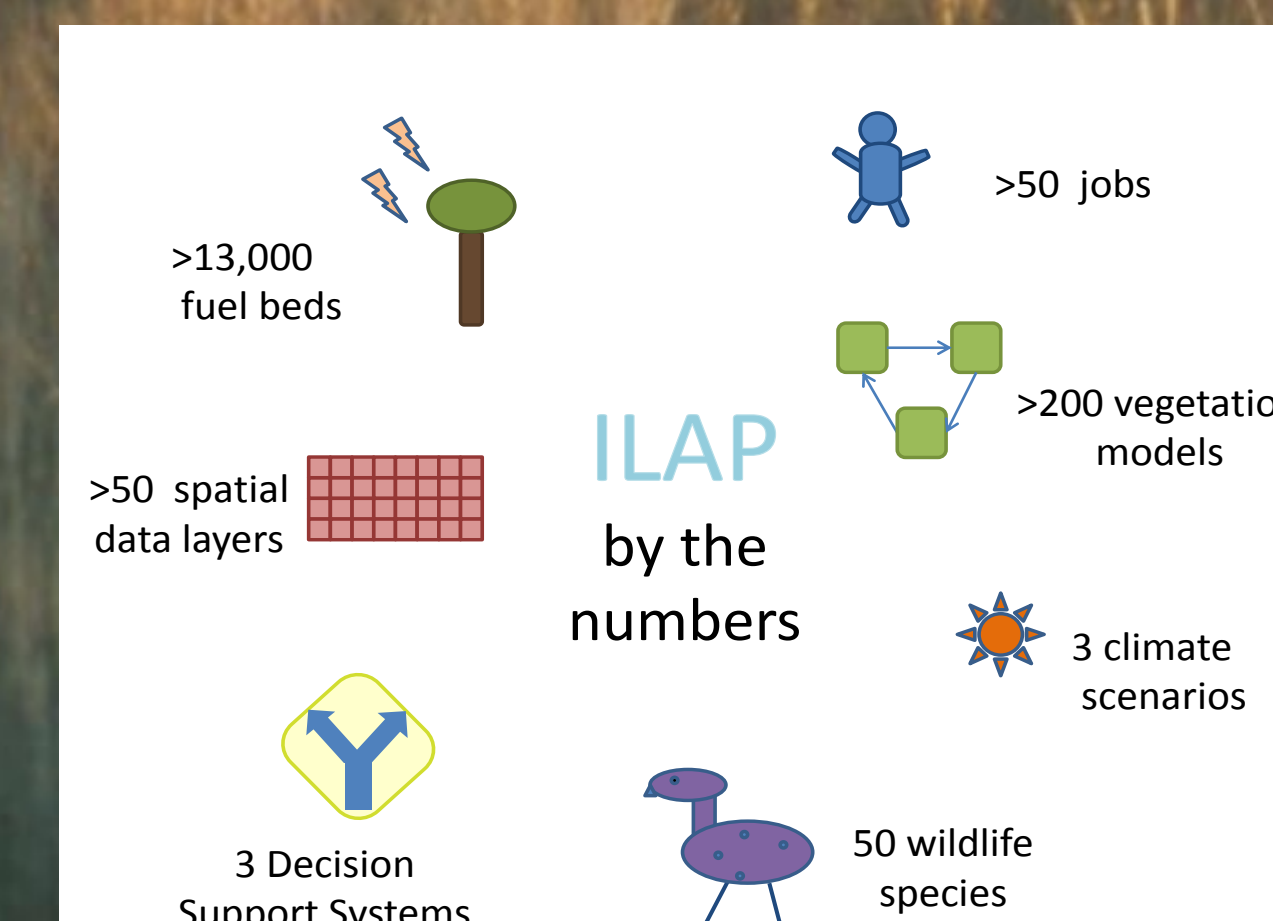


How might climate change affect vegetation? This example from the Southwest shows how likely these vegetation types are to persist on the landscape under climate change. Other vegetation types, areas, and climate scenarios have been analyzed — call or email us for more information!



WASHINGTON  
DNR

OSU  
Oregon State University



For more information:

Miles Hemstrom, Forest Service project lead, 503.808.2006, [mhemstrom@fs.fed.us](mailto:mhemstrom@fs.fed.us)  
Janine Salwasser, Project Coordinator, 541.737.9921, [janine.salwasser@oregonstate.edu](mailto:janine.salwasser@oregonstate.edu)  
Lisa Gaines, Co-PI, 541.737.1976, [lisa.gaines@oregonstate.edu](mailto:lisa.gaines@oregonstate.edu)

March 2012