

# How EcoAdapt can help LCCs

## 1. Decision Support & Information Exchange

Addressing the challenges of climate change in your work can seem as overwhelming as climate change itself. EcoAdapt strives to provide approachable, understandable and useful information to those looking to take action to improve their organizational outcomes given the realities of climate change. This includes original data analysis, decision support tools and interactive online fora for adaptation information exchange.

### Climate Adaptation Knowledge Exchange (CAKE) Your Online Adaptation Destination!

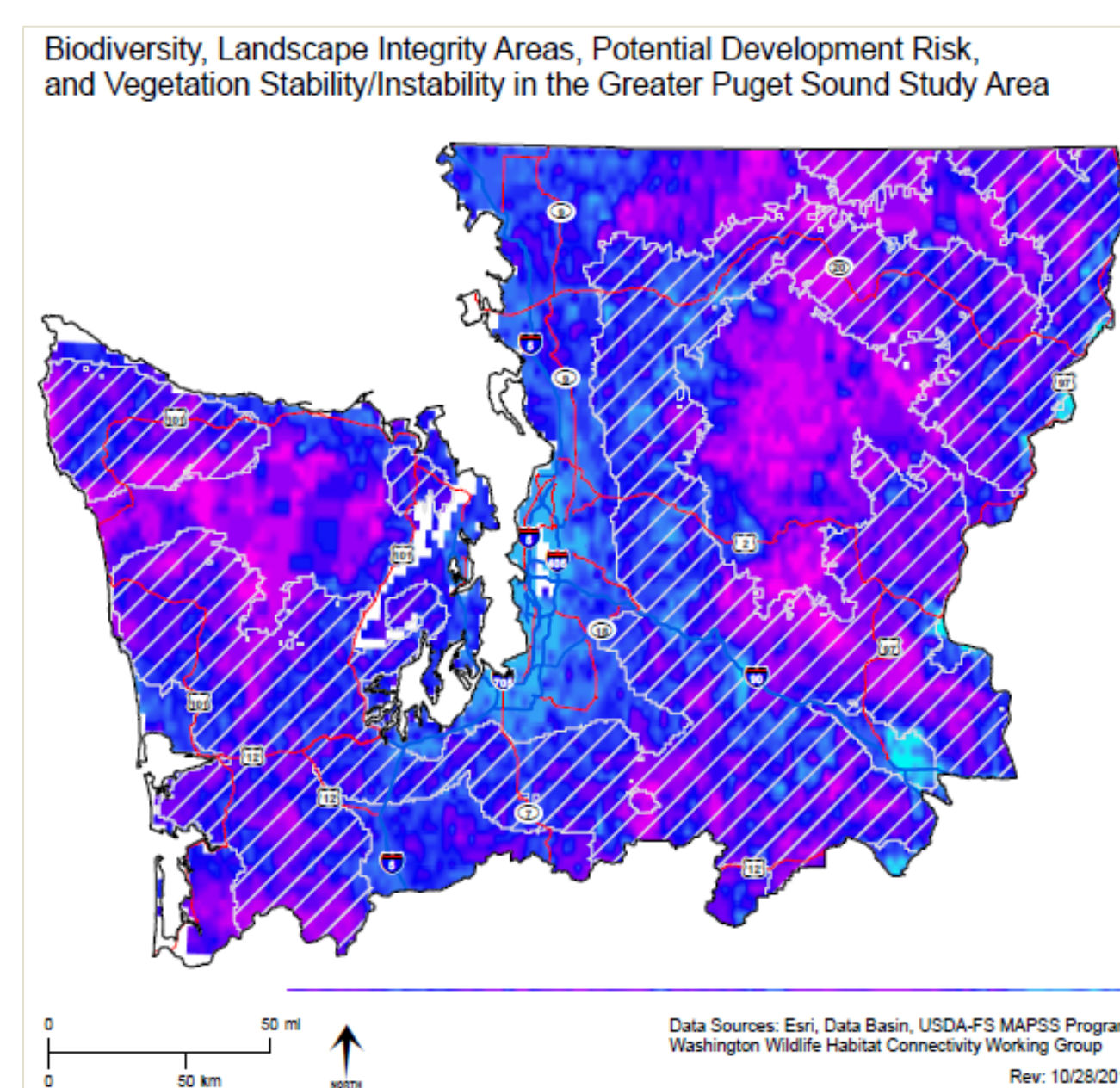


CAKE ([www.cakex.org](http://www.cakex.org)) aims to build a shared knowledge base for management and planning in the face of climate change. It is intended to support an innovative community of practice by helping users get beyond conventional limitations. Currently it houses over 24 0 climate adaptation case studies, a library of adaptation relevant literature, a discussion forum and works to connect practitioners.



### Spatial Prioritization for Adaptation

Climate-informed conservation “blueprints” for western Washington were created to highlight and prioritize areas and actions likely to increase the success of conservation efforts in a rapidly changing climate. Maps generated by the analysis identify areas that have particular ecological value and are predicted to have greater ecological stability or instability under changing climatic conditions. Government agencies and conservation organizations are partners in the SPA process.



## 2. Building Capacity and Training

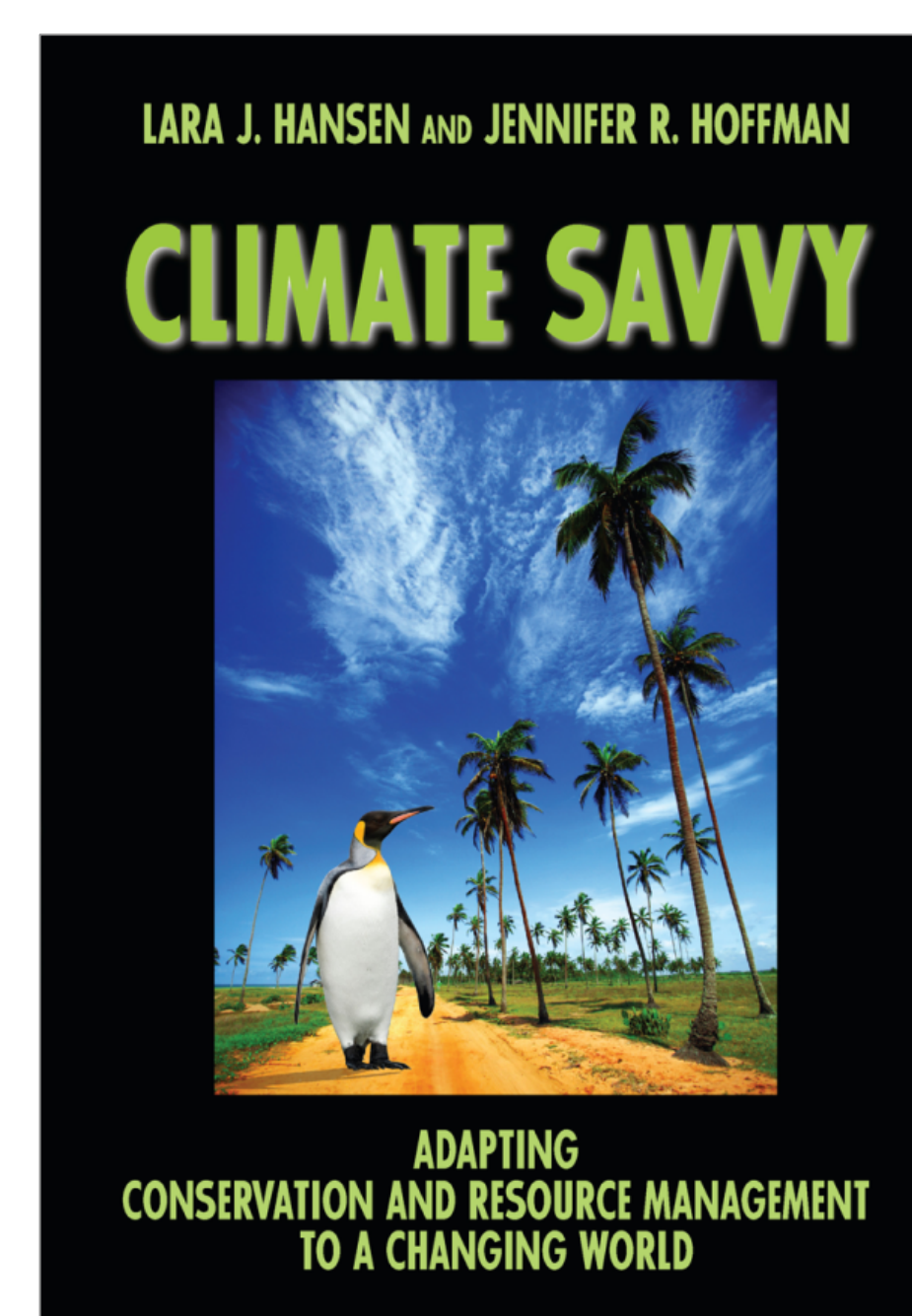
Today's conservation practitioners and resource managers often have no formal training in climate change adaptation. The field can seem daunting when you lack knowledge of the tools and approaches. EcoAdapt specializes in making adaptation tangible for our partners. Through workshops and consultations that result in implementable adaptation actions and skills development, or our educational materials, we help make adaptation happen.

### Awareness to Action Workshops

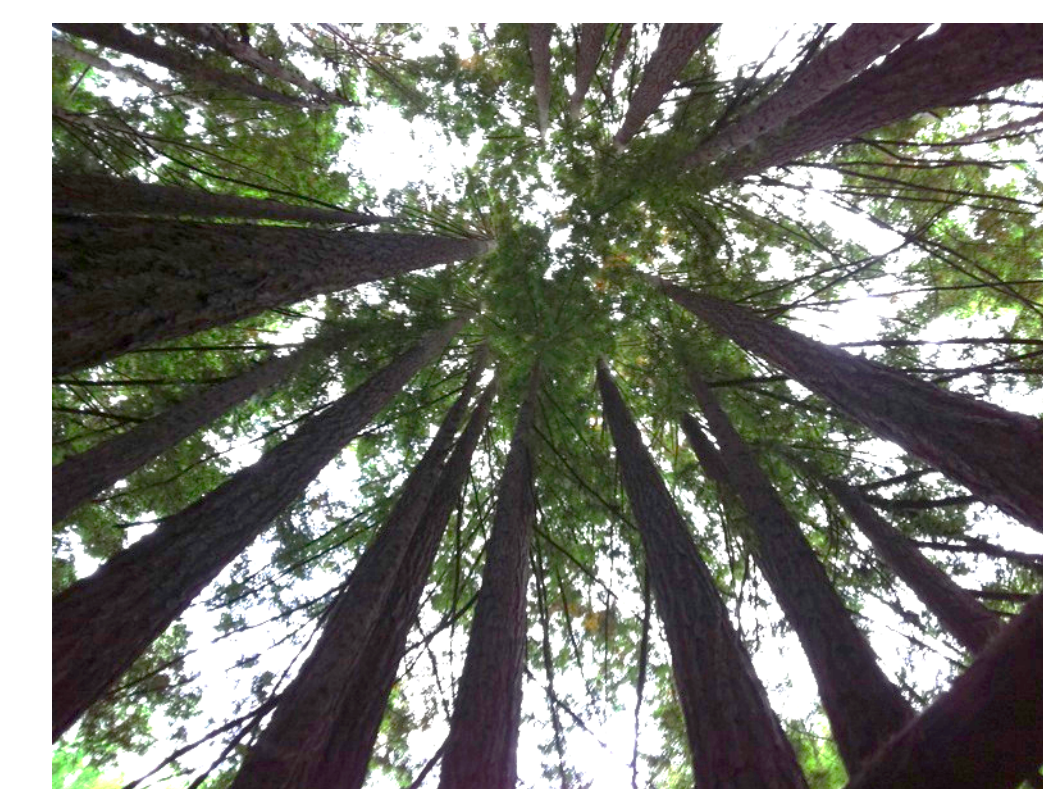
Our adaptation experts have pioneered a series of innovative and interactive climate adaptation workshops to bring those engaged in the many stages of climate change adaptation from awareness to implementation. The workshops are designed to strengthen the ability of people working on the ground to respond to climate change and create a network wherein they can share knowledge, experiences and ideas, and develop plans focused to improve the likelihood of success their own work.



### Educational products



**Climate Savvy** offers a wide-ranging exploration of how scientists, managers, and policymakers can use the challenge of climate change as an opportunity to build a more holistic and effective philosophy. General ideas, as well as practical steps and strategies, that can help people cope with climate change are presented in an easy-to-read fashion.



### Adaptation Consultation

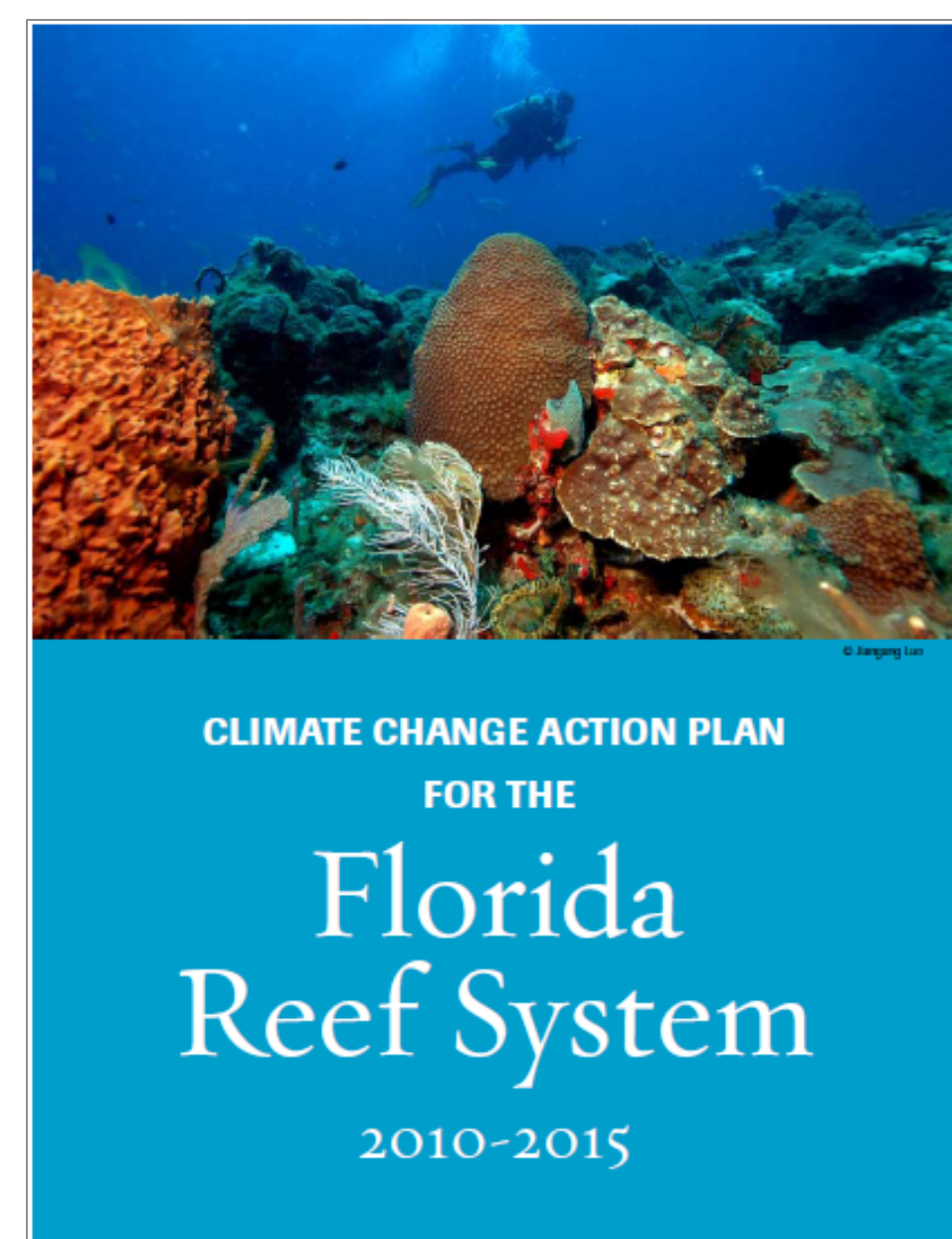
EcoAdapt's Adaptation Consultation program allows our experienced scientists to support implementation of adaptation strategies by providing capacity to partners eager to take climate adaptation action. EcoAdapt staff have extensive experience developing adaptation strategies across ecosystems and with a variety of stakeholders.

## 3. Supporting Adaptation Implementation

Climate change and adaptation get discussed at great length but the value emerges at implementation. The only way for the field of adaptation to improve and effect better future outcomes is to start developing and testing on the ground. EcoAdapt works with partners to create Adaptation Action Plans, tracks adaptation activity to empower others, and we are currently developing adaptation monitoring guidance.

### Develop Adaptation Plans and Recommendations

EcoAdapt, in collaboration with the Florida Reef Resilience Program, developed the **Climate Change Action Plan for the Florida Reef Tract 2010-2015**. The plan outlines a way forward for federal, state, and local government agencies to comprehensively act to maximize the resilience of Florida's coral reefs. It offers a framework of adaptable actions that, if implemented, could reduce the negative impacts climate change and compounding stressors may have on the reef.



### Synthesize Adaptation Activities

Adaptation is increasingly viewed as an essential component of effective management. **The State of Marine and Coastal Adaptation in North America** provides an extensive review of adaptation options in use by marine and coastal managers. EcoAdapt is currently expanding this work to other geographies and sectors, as funding emerges.

## Contact Information

Find out more at: [www.ecoadapt.org](http://www.ecoadapt.org)

Lara Hansen  
Chief Scientist and Executive Director  
[Lara@EcoAdapt.org](mailto:Lara@EcoAdapt.org)