

California Desert Conservation Area Plan as Amended

Information Resources

Jim Weigand & Vicki Campbell
BLM California State Office

East Mojave Partner Workshop
April 10, 2018
Las Vegas NV

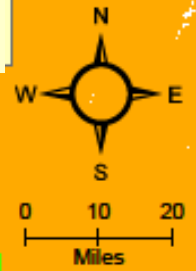


OUTLINE

- **CDCA Plan Background**
- **CDCA Plan Outcomes**
- **Relation to East Mojave Landscape Conservation Design**
 - **Connectivity**
 - **Biodiversity**
 - **Social and Cultural Values**
- **Information Resources**



CURRENT LAND OWNERSHIP STATUS



Inyo

San Bernardino



CDCA RECENT CHANGES

- **Land Allocations**

- Renewable Energy Development Areas
- Recreation Management Areas (RMAs)
- Areas of Critical Environmental Concern (ACECs)
- California Desert National Conservation Lands (CDNCLs)

- **Conservation and Management Actions (CMAs)**

- **Caps to Surface Disturbance**

- 0.25% to 1.5% maximum allowed
- Tracking in real time



Recent Land Allocations for Renewable Energy

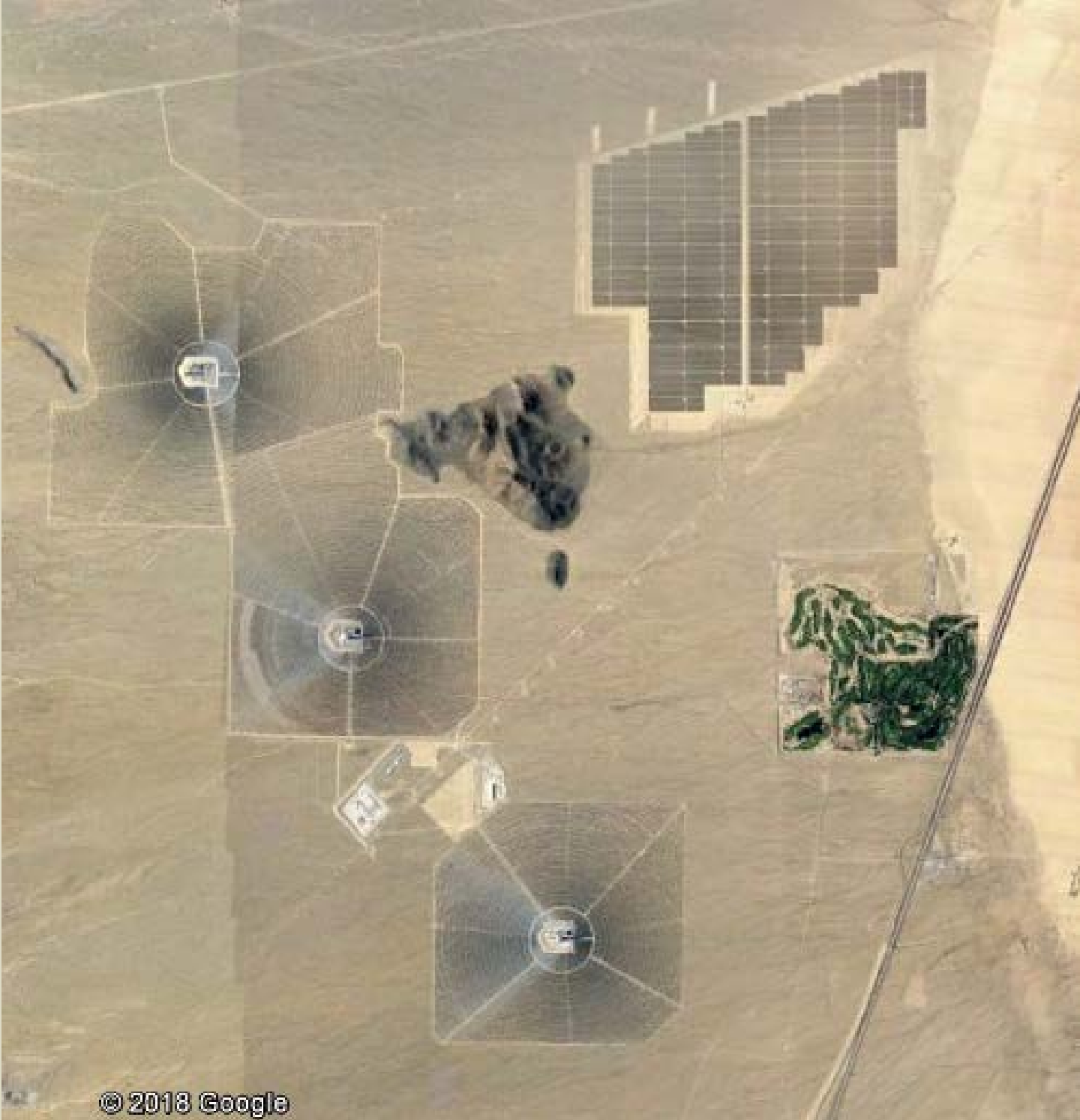
- **Development Focus Areas (DFAs)**

areas where renewable energy development - solar, wind, geothermal and related infrastructure - is streamlined and incentivized

- **Variance Process Lands (VPLs)**

areas conditionally available for renewable energy development, with minimal streamlining - no Plan amendment required but no incentives as well

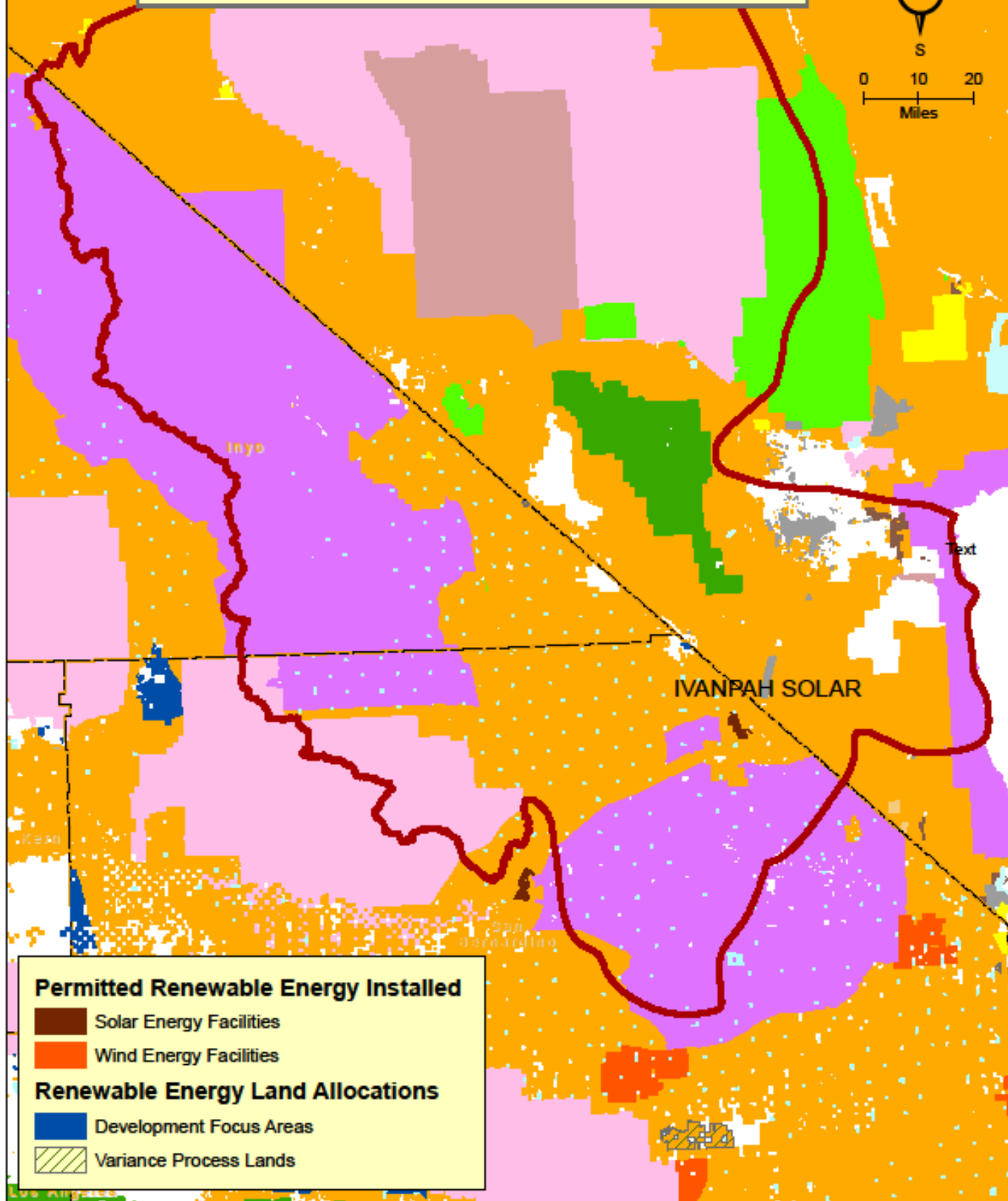
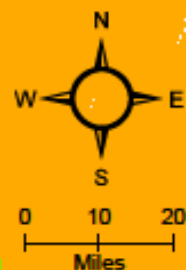






IVANPAH SOLAR DEVELOPPMENTS





CURRENT RENEWABLE ENERGY DEVELOPMENT



Permitted Renewable Energy Installed

-  Solar Energy Facilities
-  Wind Energy Facilities

Renewable Energy Land Allocations

-  Development Focus Areas
-  Variance Process Lands



Recent Land Allocations for Recreation

- **Extensive Recreation
Management Areas (ERMAs)**

areas with defined demand, managed equally with other resources

- **Special Recreation Management
Areas (SRMAs)**

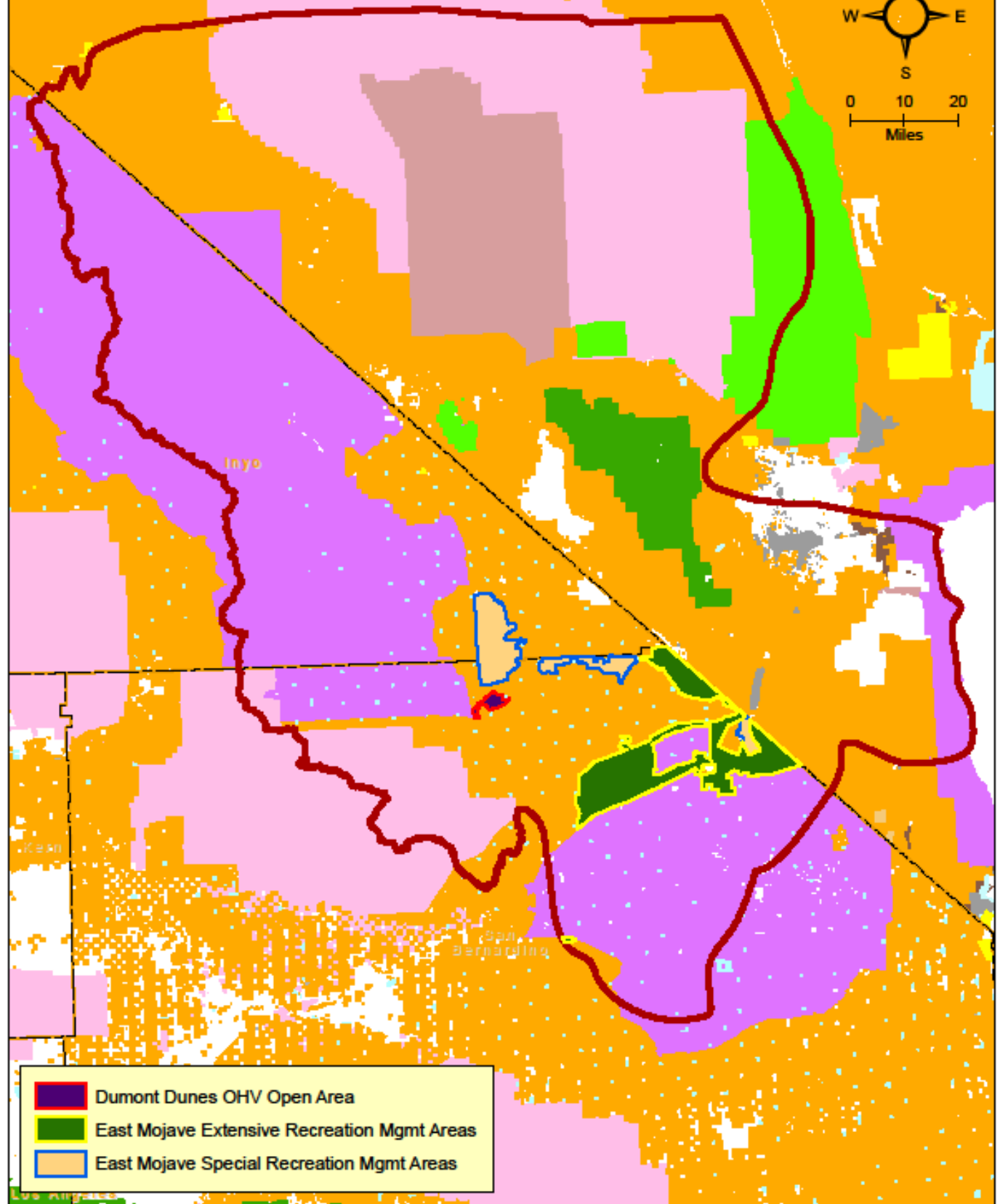
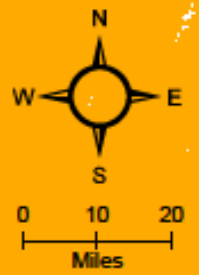
high-priority unique areas with directed funding and personnel for a defined market




- **Dumont Dunes Open Riding
SRMA**

CDCA OHV recreation area, now a SRMA



RECREATION FOCUS AREAS



-  Dumont Dunes OHV Open Area
-  East Mojave Extensive Recreation Mgmt Areas
-  East Mojave Special Recreation Mgmt Areas



Recent Key Land Allocations for Conservation

- **New Areas of Critical
Environmental Concern (ACECs)**

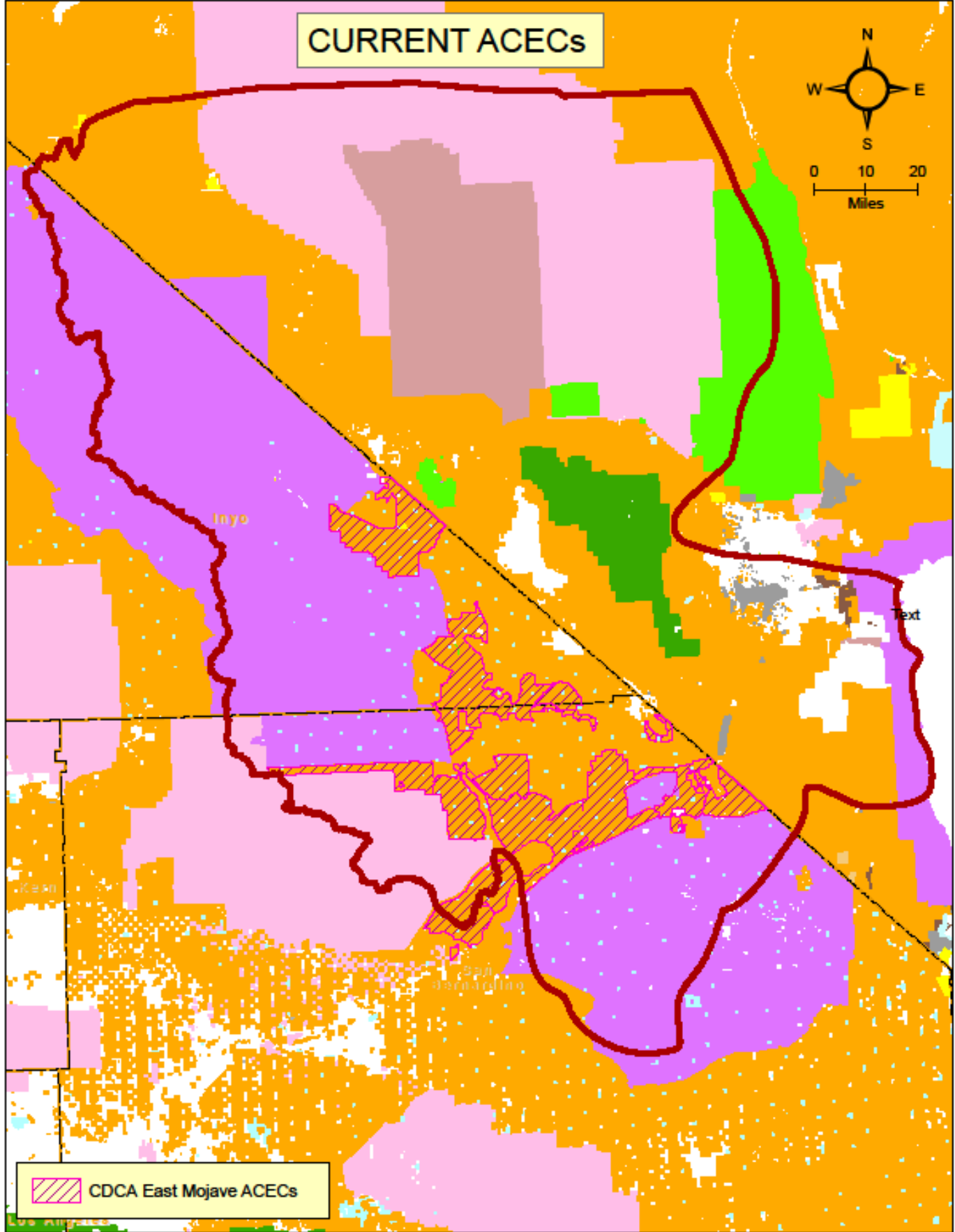
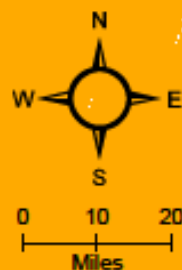
areas fulfilling the conservation, ecological and cultural, purpose of the CDCA as self-contained units of high natural resource value


- **California Desert National
Conservation Lands (CDNCLs)**

areas established by BLM California per the Omnibus Public Land Management Act of 2009 to protect nationally significant landscapes for their outstanding ecological, cultural and scientific values



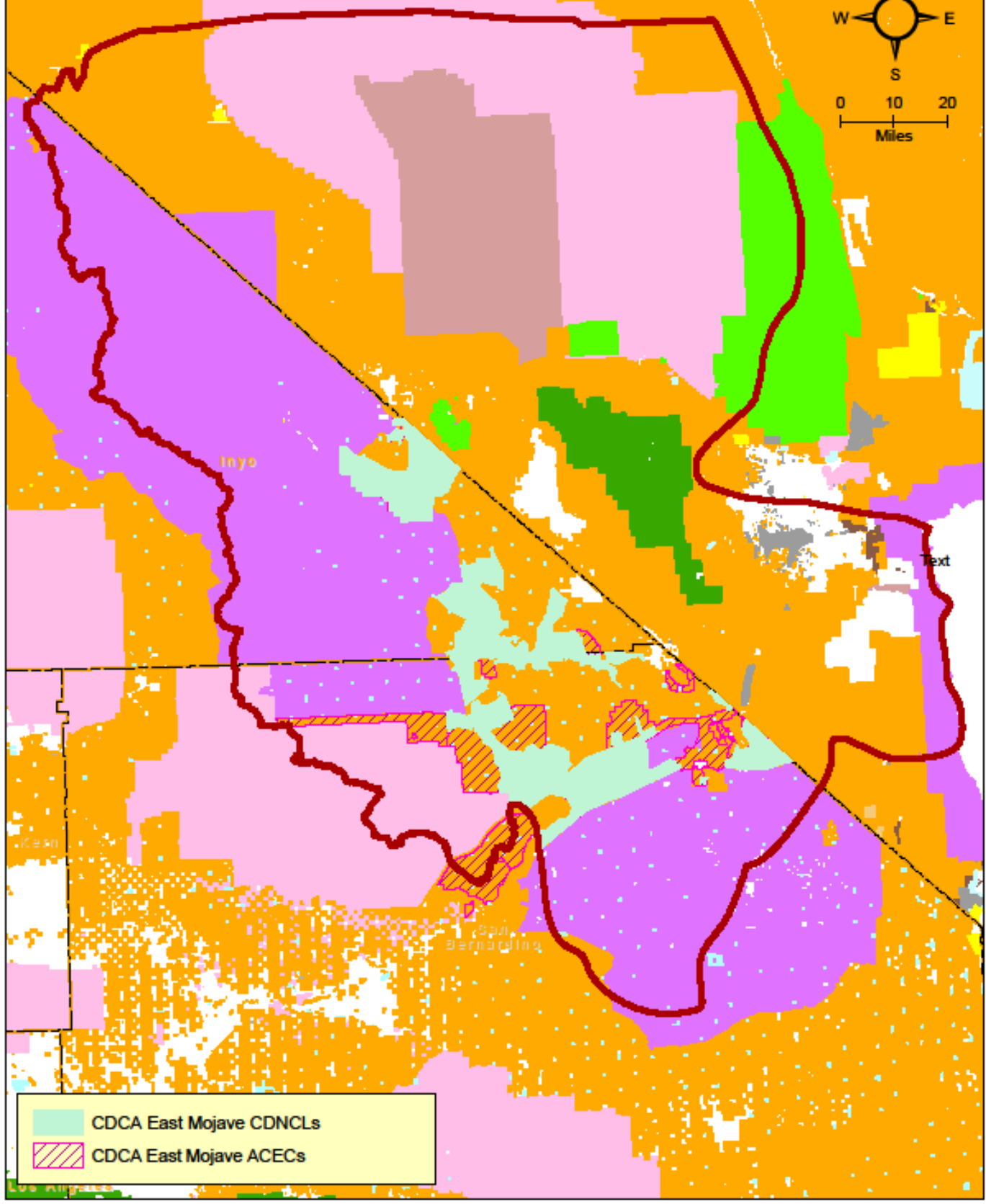
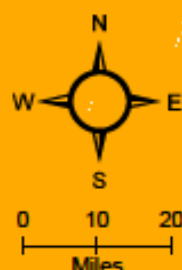
CURRENT ACECs

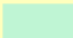



 CDCA East Mojave ACECs



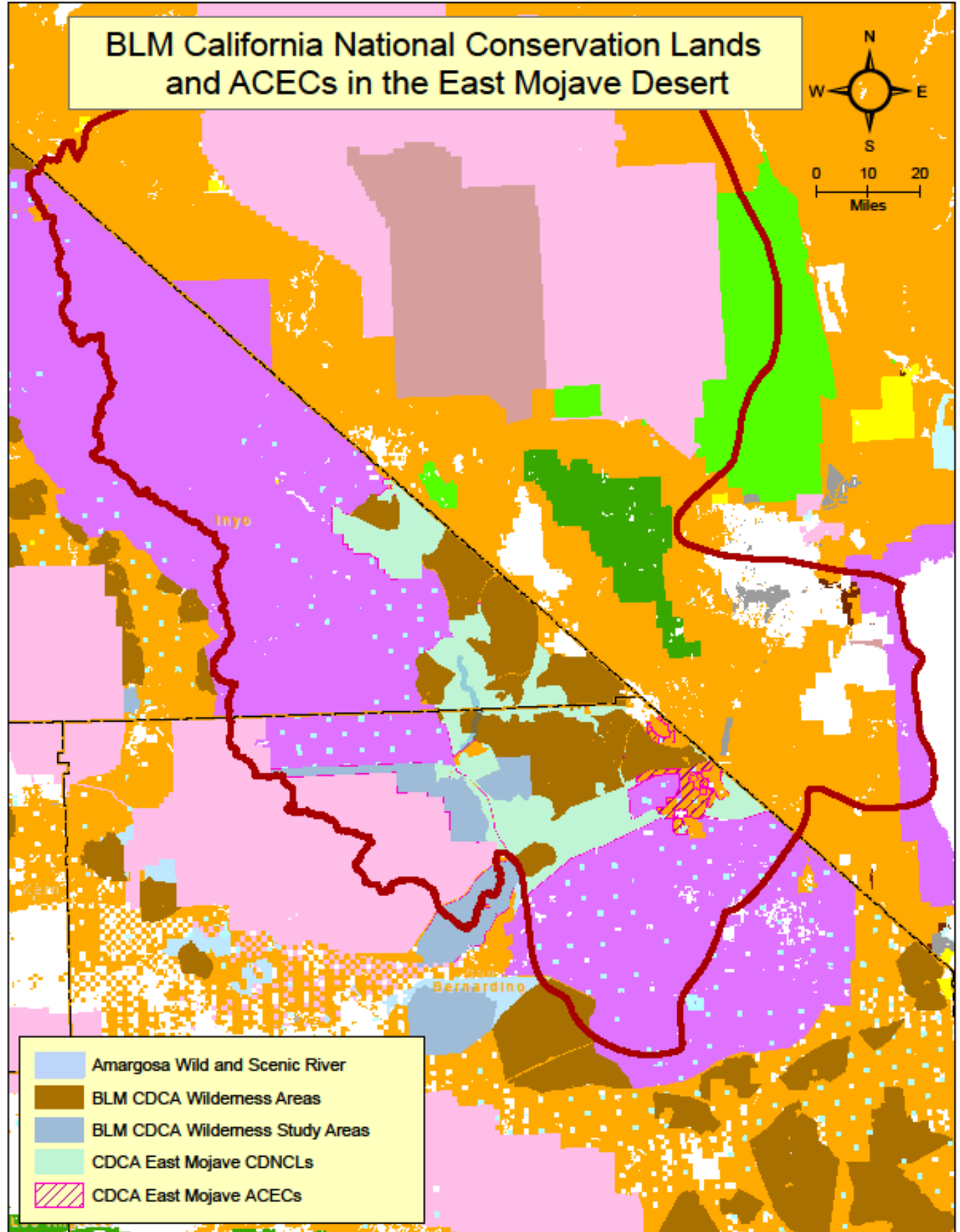
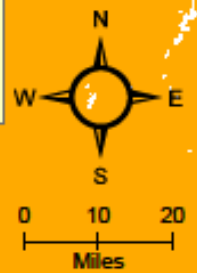
CURRENT CDNCLs and ACECs



-  CDCA East Mojave CDNCLs
-  CDCA East Mojave ACECs



BLM California National Conservation Lands and ACECs in the East Mojave Desert



LINKAGE INFORMATION

- **Coarse-Filter Connectivity for Protected Areas**
- **Migration Corridors**
e.g., Desert Bighorn Sheep
- **Refugia Networks**
- **Habitat Intactness Evaluation**
- **Habitat Disturbance**



BIODIVERSITY INFORMATION

Focal Taxa

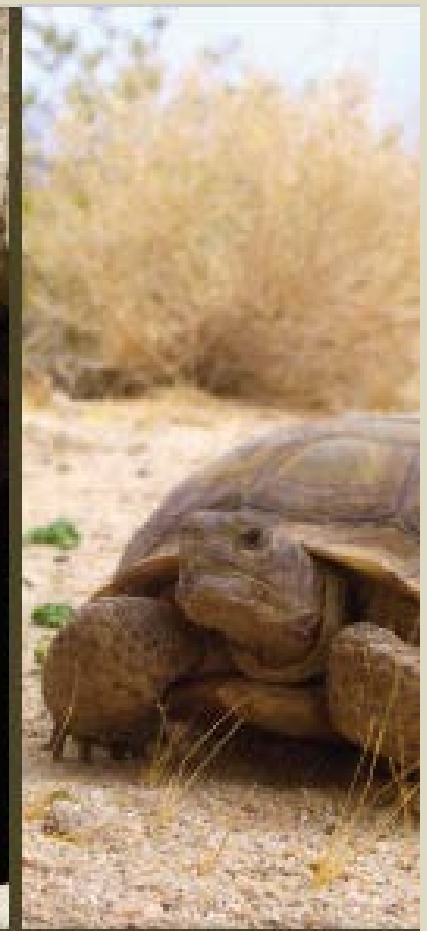
- 10 Plants
- 14 Birds
- 5 Mammals
- 4 Herps
- 4 Fishes



Rare Desert Habitat

- Grasslands
- Riparian





California Desert Biological Conservation Framework

December 2016



[http://www.drecp.org/documents/docs/conservationbio/files/01-CA Desert Bio Conservation Framework.pdf](http://www.drecp.org/documents/docs/conservationbio/files/01-CA%20Desert%20Bio%20Conservation%20Framework.pdf)



U.S. Department of the Interior
Bureau of Land Management

SOCIAL and CULTURAL INFORMATION

- **Tribal Consultation**
- **Outreach to County Governments**
- **Inclusion Efforts**
 - 70+ Public Meetings and Webinars
 - Extended Comment Periods
- **Design for Recreation Landscapes**
- **Cultural and Historical Background of ACECs**
- **Public Access to Information**



**INFORMATION
on CDCA RESOURCES
ONLINE**

DRECP Planning Documents

www.drecp.org

**DRECP Conservation
Framework**

Habitat & Species Models

**[http://www.drecp.org/documents/
#conservationbio](http://www.drecp.org/documents/#conservationbio)**

**DRECP Gateway
Data Sets**

www.drecp.databasin.org



**INFORMATION
on CDCA RESOURCES
IN HOUSE**

**California Natural Diversity
Database**

Rare Wildlife and Plant Information

**Rare Desert Plant Distribution
Models**

**Updated CDFW Vegetation
Mapping**



OTHER CDCA INFORMATION RESOURCES DOCUMENTS

1976-1981 CDCA Resource Reports

BLM National Library

<https://www.blm.gov/learn/blm-library>

**2002 Northern and Eastern
Mojave Desert Management Plan**

[Appendices](#)



CDCA INFORMATION

BLM CONTACTS

Vicki Campbell - DRECP Project Manager
vlcampbell@blm.gov

Jeremiah Karuzas - Renewable Energy Lead
jkaruzas@blm.gov

Elizabeth Meyer-Shields - NEPA Planner
eameyer@blm.gov

Russell Scofield - DRECP Implementation Lead
ascofield@blm.gov

Jim Weigand - Ecologist
jweigand@blm.gov



OTHER BLM RESOURCES

Mojave Basin and Range

Rapid Ecological Assessment (REA)

2013

REA Report

<https://www.nrc.gov/docs/ML1521/ML15211A622.pdf>

REA Model Catalog

<https://databasin.org/documents/documents/ab4dad5df76649b08ce83689f2538d9f/>

REA Map Catalog

<https://databasin.org/documents/documents/638a752d58ab4ec0988ac484c8788db7/>



QUESTIONS?



